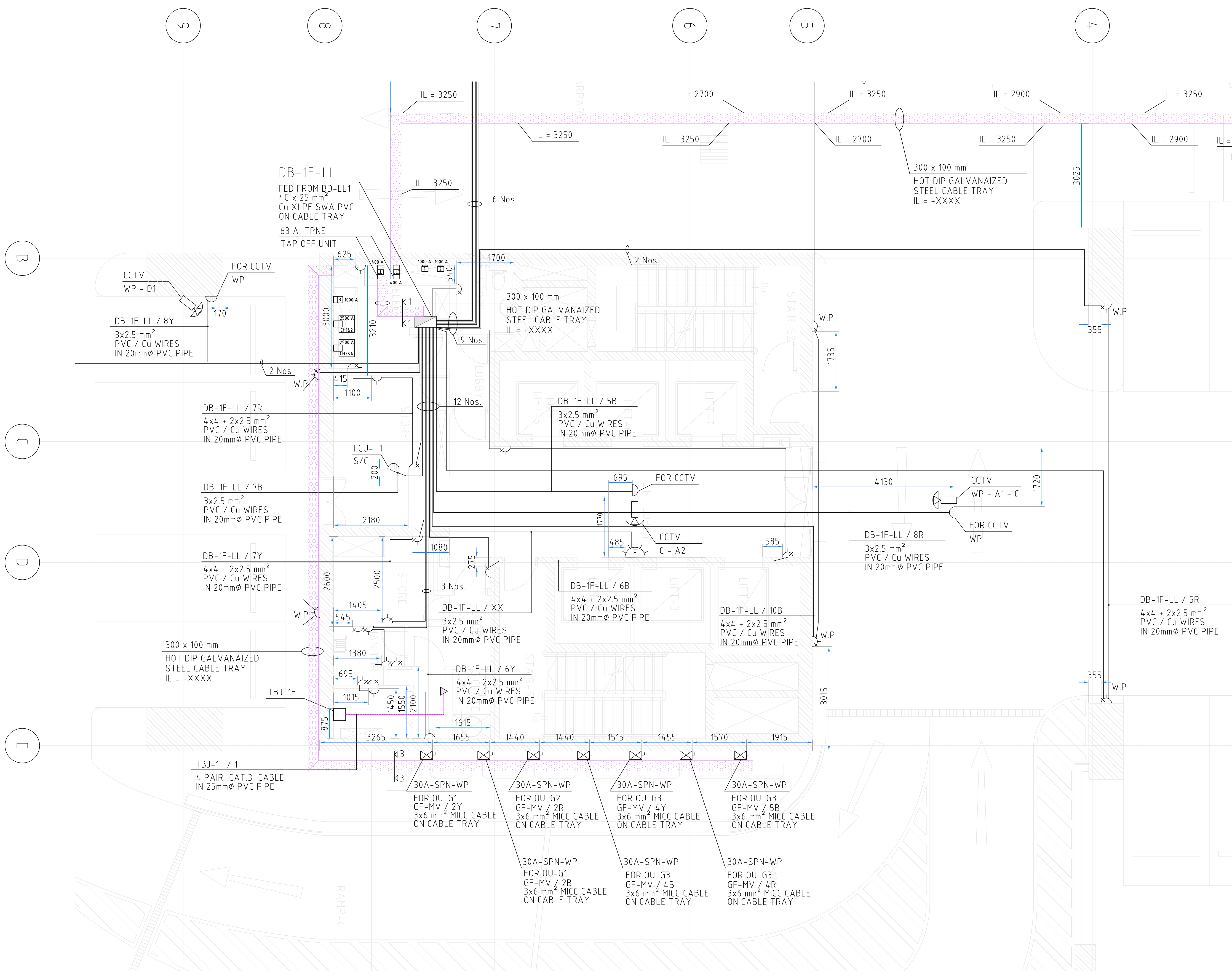
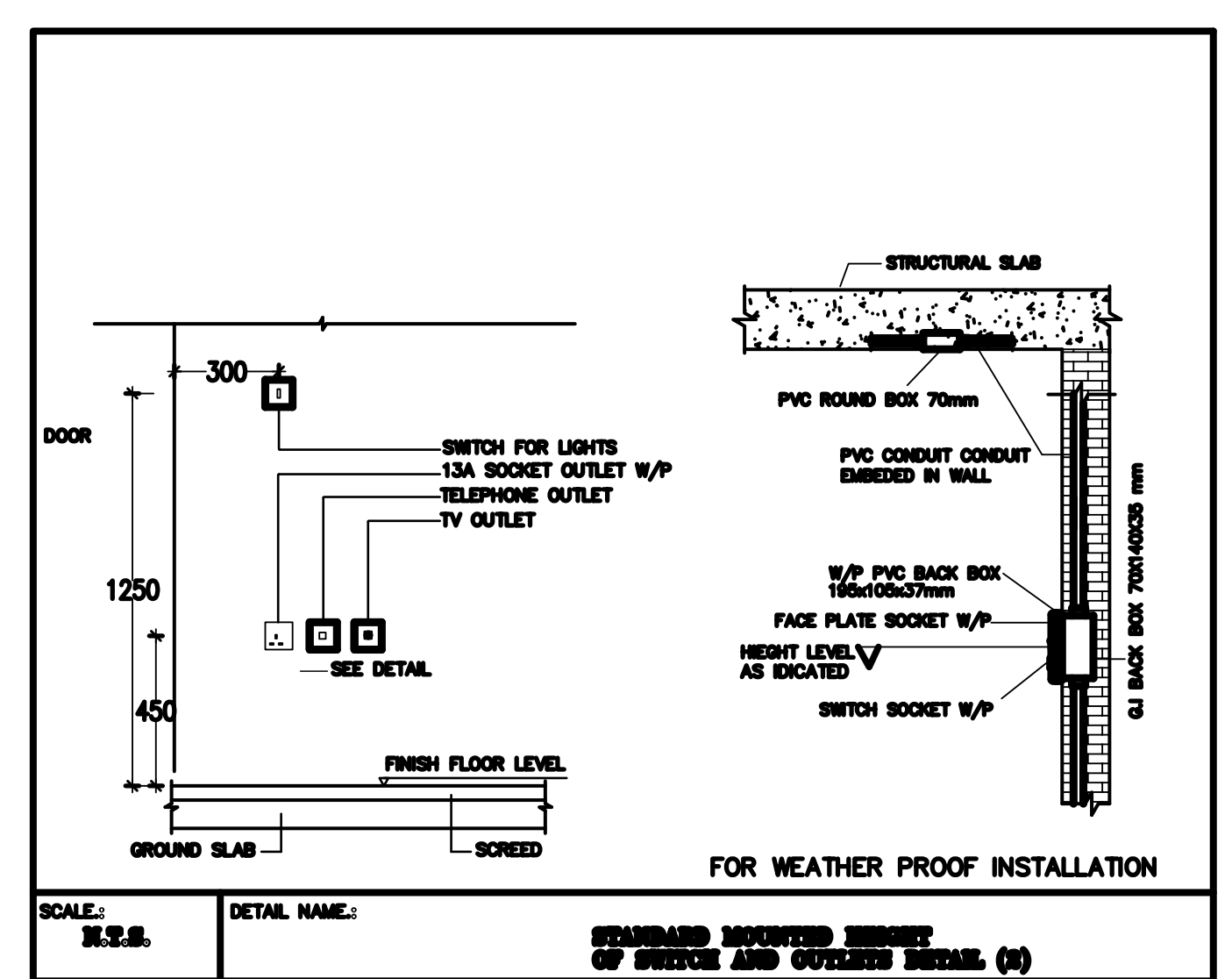
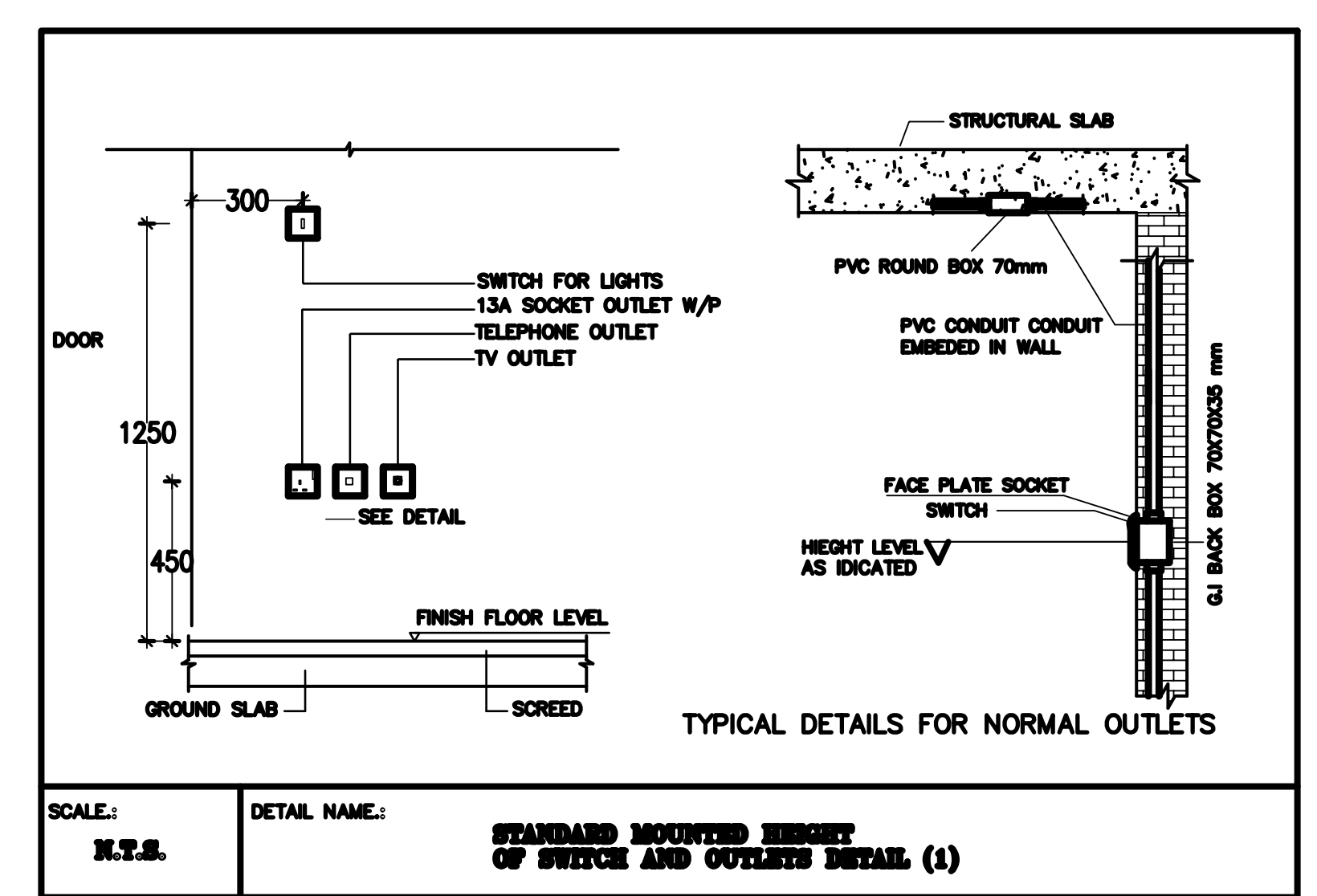
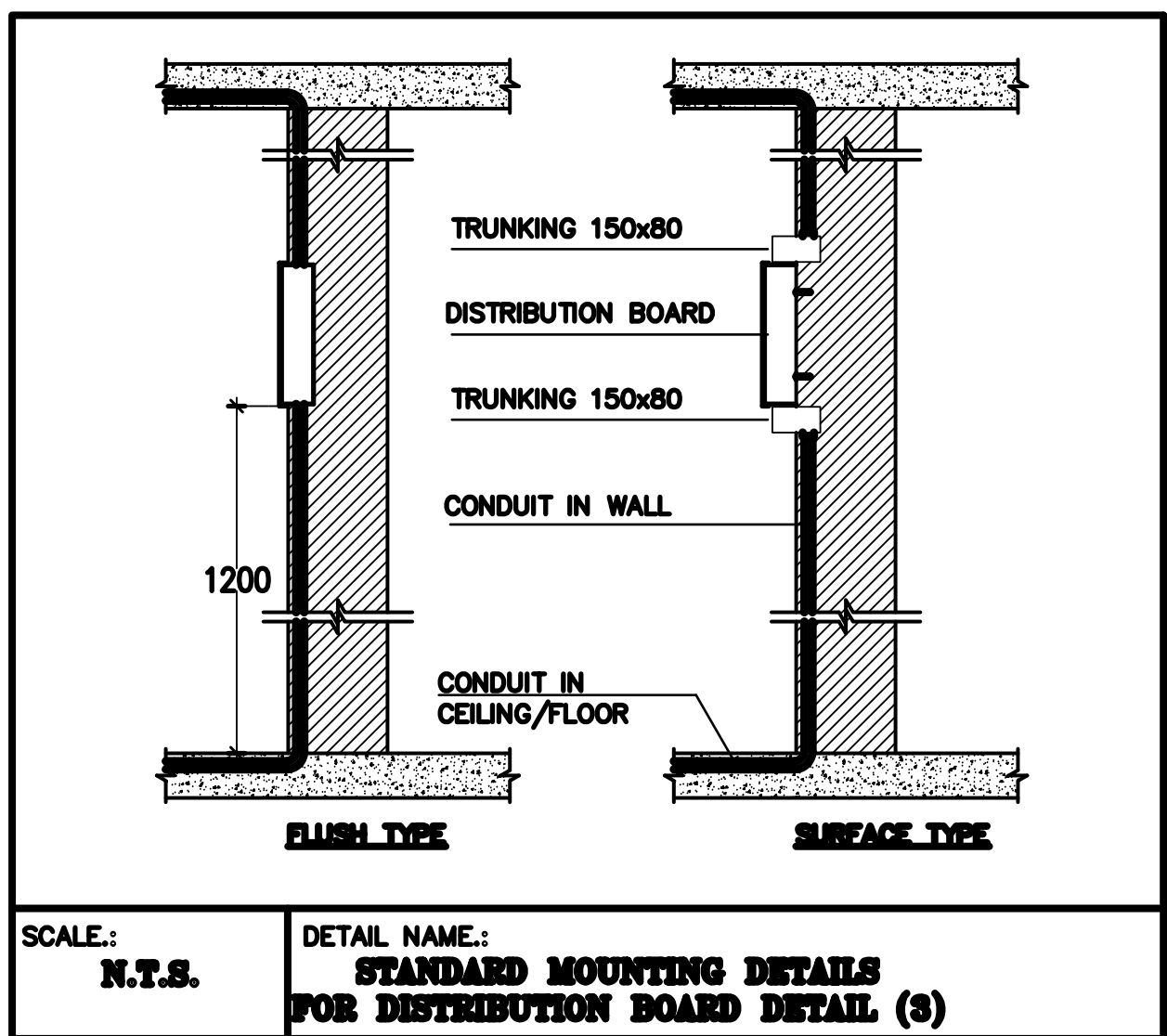
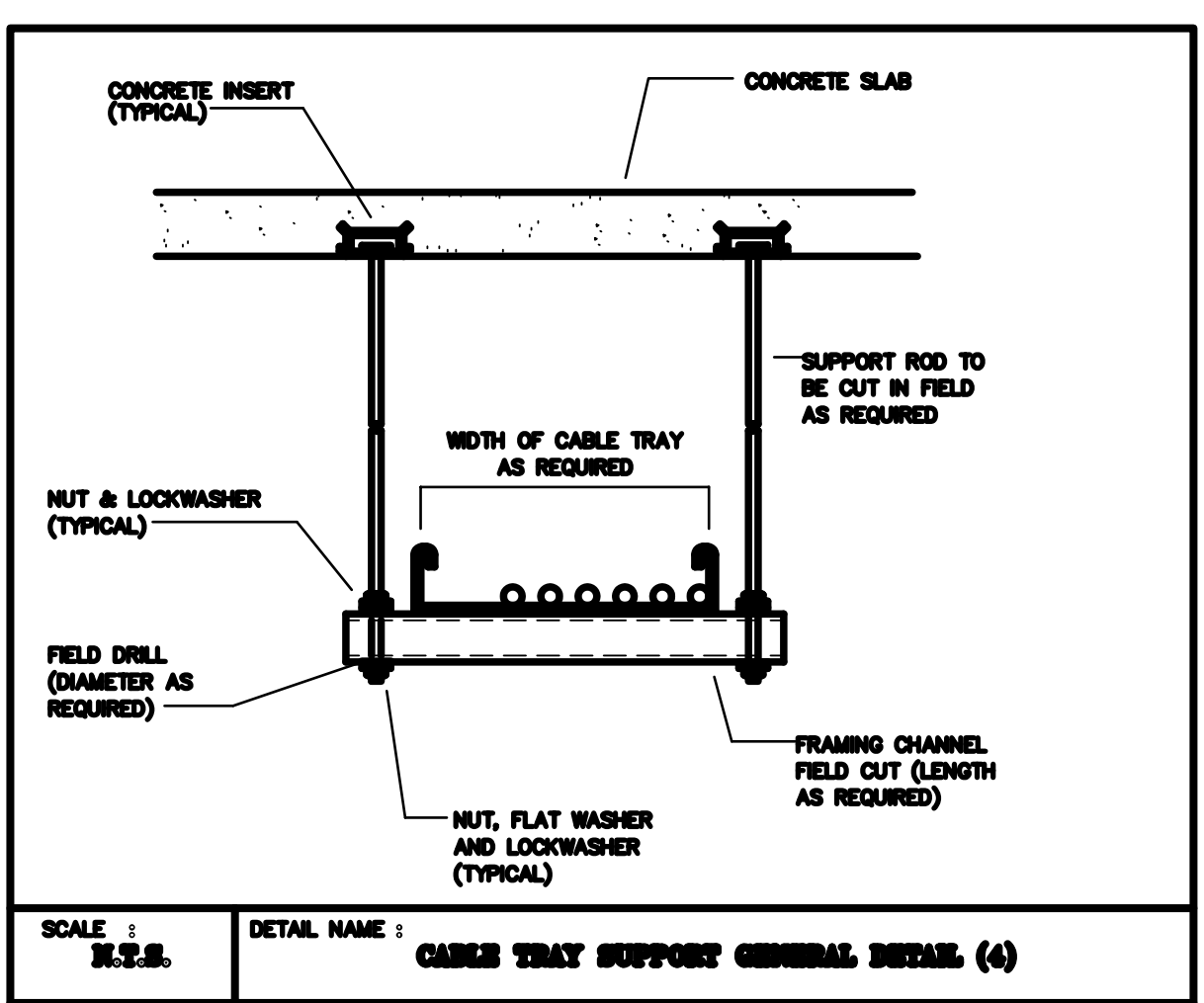
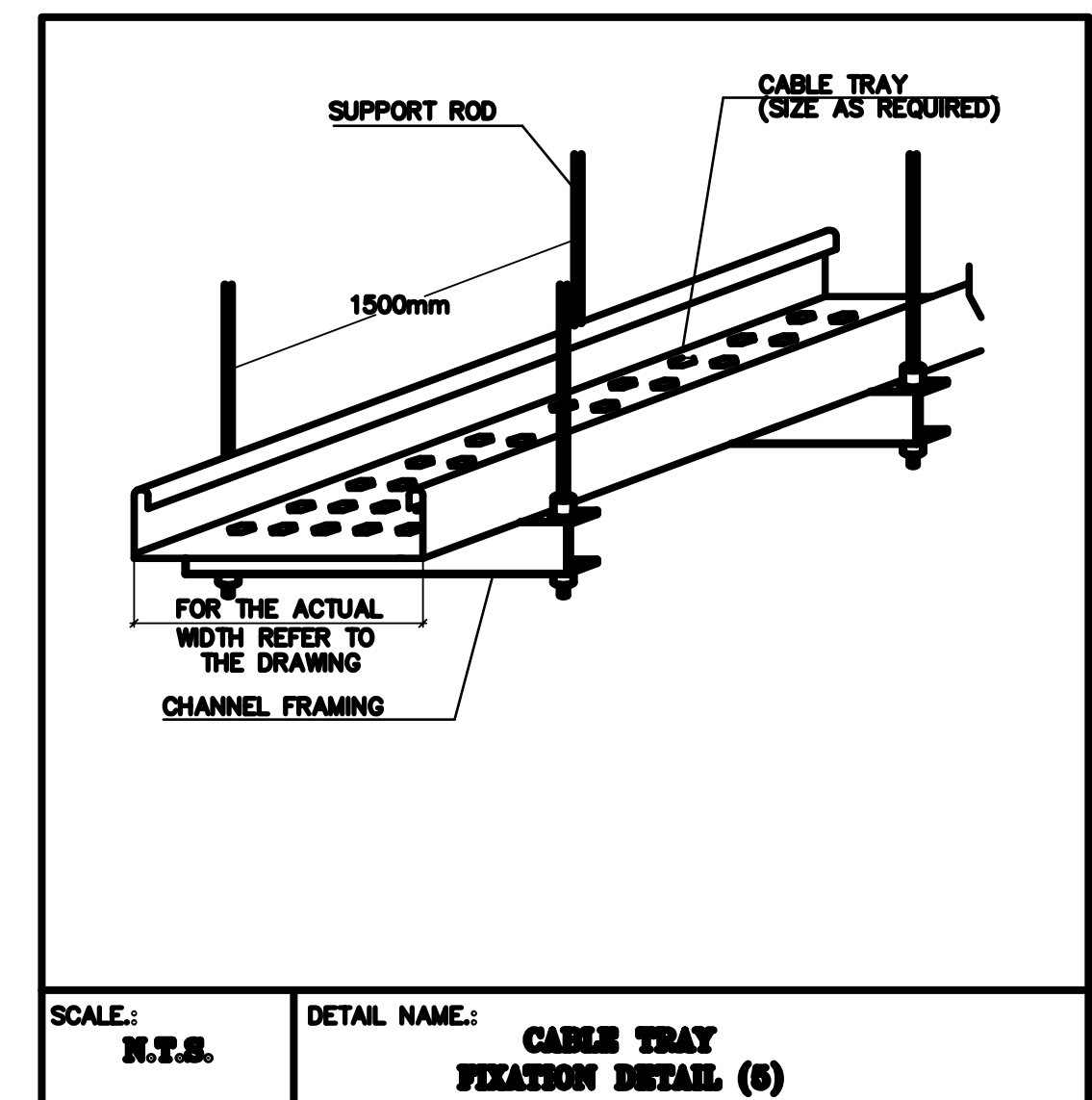
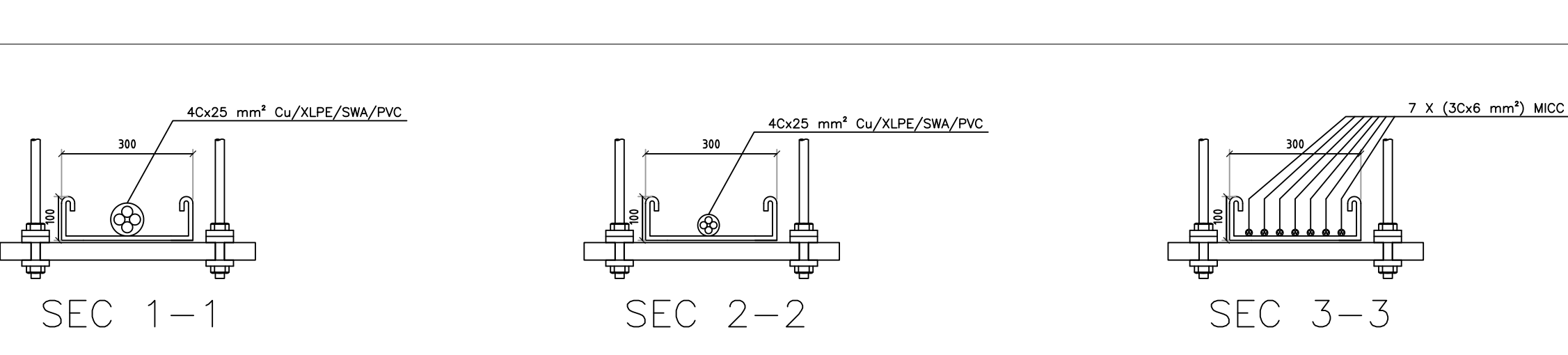


DB REF. & LOCATION	DB-1F-LL (FIRST FLOOR)
FED FROM	REFER TO SCHEMATIC DIAGRAM
FEEDER SIZE	REFER TO SCHEMATIC DIAGRAM
* ELCB 30mA SENSITIVITY. WAY NO. PHASE BREAK COLOR SIZE DESCRIPTION LOCATION TYPE OF LOAD WIRE SIZE TYPE OF CABLE CONTA. RATE (Amps) CONTA. REF. NO. PHASE LOAD FR PHASE LOAD YR PHASE LOAD EB	
1	R 10 8x100 PARK AREA LTG 3x2.5 PVC 16 C1 800 Y 10 5x100 PARK AREA LTG 3x2.5 PVC 16 C2 500 B 16 12x100 DRIVE WAY LTG 3x2.5 PVC 16 C3 R 10 14x100 DRIVE WAY LTG 3x2.5 PVC 16 C4 1400 2 Y 10 6x100 PARK AREA LTG 3x2.5 PVC 16 C5 600 B 10 6x100 PARK AREA LTG 3x2.5 PVC 16 C6 600 R 10 11x100 LIFT LOBBY LTG 3x2.5 PVC 16 C7 1100 3 Y 10 5x100 STORE+TELECOM LTG 3x2.5 PVC 16 C8 500 B 10 4x100 STORE+ELECT LTG 3x2.5 PVC 16 C9 400 R 10 7x100 AHU ROOM LTG 3x2.5 PVC 16 C10 700 4 Y 16 14x100 LIFT LOBBY LTG 3x2.5 PVC 16 CB 1400 B 16 1X1000 LIFT LOBBY FLASHER RSO 3x2.5 PVC 16 C11 500 R 30* 2x100 DRIVE WAY RSO 4x4+2x2.5 PVC 16 C12 200 5 Y 6 1x200 CCTV DRIVE WAY CCTV G.P 3x2.5 PVC 16 C13 200 B 6 1x200 CCTV LIFT LOBBY CCTV G.P 3x2.5 PVC 16 C14 200 R 30* 5x100 AHU ROOM RSO 4x4+2x2.5 PVC 16 C15 500 6 Y 30* 8x100 TELECOM RSO 4x4+2x2.5 PVC 16 C16 800 B 30* 3x100 LIFT LOBBY RSO 4x4+2x2.5 PVC 16 C17 300 R 30* 5x100 ELECTRIC ROOM+STORE RSO 4x4+2x2.5 PVC 16 C18 500 7 Y 30* 2x100 STORE RSO 4x4+2x2.5 PVC 16 C19 200 B 10 FCU-T1 STORE FCU 3x2.5 PVC 16 C20 750 R 6 1x200 DRIVE WAY CCTV G.P 3x2.5 PVC 16 C21 200 8 Y 6 1x200 DRIVE WAY CCTV G.P 3x2.5 PVC 16 C22 200 B 10 9x100 RAMP LTG 3x2.5 PVC 16 C23 900 R 10 9x100 RAMP LTG 3x2.5 PVC 16 C24 900 Y 10 7x100 RAMP LTG 3x2.5 PVC 16 C25 700 B 30* SPARE - - - - - R 30* SPARE - - - - - Y 30* SPARE - - - - - B 30* SPARE - - - - - 10 Y 30* 6x100 DRIVE WAY RSO 4x4+2x2.5 PVC 16 C26 600 R - SPARE - - - - - 11 Y 30 A/C AHU ROOM A/C 3x6 PVC 16 C27 3000 B 30 A/C AHU ROOM A/C 3x6 PVC 16 C28 3000 R - SPACE - - - - - B - SPACE - - - - - R - SPACE - - - - - Y - SPACE - - - - - B - SPACE - - - - - R - SPACE - - - - - 13 Y - SPACE - - - - - B - SPACE - - - - - R - SPACE - - - - - Y - SPACE - - - - - B - SPACE - - - - -

DB REF. & LOCATION	DB-GF-MV (GROUND FLOOR)
FED FROM	REFER TO SCHEMATIC DIAGRAM
FEEDER SIZE	REFER TO SCHEMATIC DIAGRAM
* ELCB 30mA SENSITIVITY. WAY NO. PHASE BREAK COLOR SIZE DESCRIPTION LOCATION TYPE OF LOAD WIRE SIZE TYPE OF CABLE CONTA. RATE (Amps) CONTA. REF. NO. PHASE LOAD FR PHASE LOAD YR PHASE LOAD EB	
1	R 10 12x100 MSB ROOM & TX ROOM LTG 3x2.5 MICC 16 C1 1200 Y 6 5x100 MSB ROOM & TX ROOM LTG 3x2.5 MICC 16 C2 500 B 10 9x100 HV ROM LTG 3x2.5 MICC 16 C3 900 R 10 A/C SPLIT MSB ROOM A/C 3x6 MICC 16 C4 3200 2 Y 6 A/C SPLIT MSB ROOM A/C 3x6 MICC 16 C5 3200 B 10 A/C SPLIT MSB ROOM A/C 3x6 MICC 16 C6 3200 R 30* 3x100 MSB ROOM RSO 4x4+2x2.5 MICC 16 C7 300 3 Y 30* 3x100 TX ROOM RSO 4x4+2x2.5 MICC 16 C8 300 B 30* 6x100 HV ROOM RSO 4x4+2x2.5 MICC 16 C9 600 R 30 A/C SPLIT MSB ROOM A/C 3x6 MICC 16 C10 3200 4 Y 30 A/C SPLIT MSB ROOM A/C 3x6 MICC 16 C11 3200 B 30 A/C SPLIT MSB ROOM A/C 3x6 MICC 16 C12 3200 R 30* SPARE - - - - - 5 Y 30 MCC-EXF MSB ROOM G.P 3x6 MICC 16 C13 1500 B 30 A/C SPLIT MSB ROOM A/C 3x6 MICC 16 C14 3200 R - SPACE - - - - - Y - SPACE - - - - - B - SPACE - - - - - R - SPACE - - - - - Y - SPACE - - - - - B - SPACE - - - - - R - SPACE - - - - - 8 Y - SPACE - - - - - B - SPACE - - - - -

⚡	13A SWITCHED TYPE, SINGLE SOCKET OUTLET WP : WEATHER PROOF - MASTER SEAL TYPE CD : METAL CLAD TYPE H/L : HIGH LEVEL
⚡	13A SWITCHED TYPE, DOUBLE SOCKET OUTLET WP : WEATHER PROOF - MASTER SEAL TYPE CD : METAL CLAD TYPE H/L : HIGH LEVEL D : DESK MOUNTED
⚡	FUSED SPUR CONNECTION UNIT WITH LAMP INDICATION S : SWITCHED C : CEILING MOUNTED H/L : HIGH LEVEL CD : METAL CLAD
⚡	FLEX OUTLET CONNECTION UNIT RATING TO SUIT THE ADJACENT SWITCH C : CEILING MOUNTED WP : WEATHER PROOF MASTER SEAL TYPE H/L : HIGH LEVEL
⚡	20A DOUBLE POLE SWITCH, WITH LAMP INDICATION WP : WEATHER PROOF MASTER SEAL TYPE
⚡	FLASHER
⚡	DOOR CONTACT / READ SWITCH WP : WEATHER PROOF
⚡	DISCONNECTION POWER ISOLATOR, RATING AS INDICATED ON DRAWING WP : WEATHER PROOF. SF : SWITCH FUSE.
⚡	MOTOR CONTROL CENTRE (MCC)/CONTROL PANEL
⚡	DISTRIBUTION BOARD FP-FEDER PILLAR-METAL ENCLOSURE-IP-65
⚡	BUS DUCTS RATING AS INDICATED ON DRAWING
⚡	63A PLUG IN TAP OFF UNIT
⚡	HOT DIP G.I. STEEL CABLE TRAY RATING AS INDICATED ON DRAWING
⚡	WIRING IN HEAVY GAUGE PVC CONDUIT EMBEDDED WALL
⚡	WIRING IN HEAVY GAUGE PVC CONDUIT (EMBEDDED) IN CONCEALED IN CEILING SLAB
⚡	KRONE TYPE JUNCTION BOX, HINGED COVER BACK PLATE AND TERMINAL STRIPS (CAPACITY AS INDICATED)
⚡	TELEPHONE DUAL SOCKET OUTLET (G-TEL STANDARD) P : PAY PHONE SINGLE SOCKET OUTLET
⚡	CCTV CAMERA A : PTZ/FULL FUNCTION CAMERA, CEILING MOUNTED A1 : DITTO AS "A" ABOVE BUT DOME TYPE A2 : PTZ/FULL FUNCTION DOME TYPE RECESSED IN FALSE CEILING A3 : PTZ/FULL FUNCTION DOME TYPE CAMERA MOUNTED ON POLE B : PTZ/FULL FUNCTION CAMERA, WALL MOUNTED B1 : DITTO AS "B" ABOVE BUT DOME TYPE C : FIXED CAMERA, RECESSED IN FALSE CEILING/DOME TYPE C1 : DITTO AS "C" ABOVE BUT DOME TYPE C2 : FIXED CAMERA CEILING MOUNTED DOME TYPE D : FIXED CAMERA, WALL MOUNTED D1 : DITTO AS "D" ABOVE BUT DOME TYPE W.P : WEATHER PROOF



SUB CONTRACTOR:
 T & C QATAR L.L.C. - C.R. 35109
 P.O. Box: 2329 DOHA, QATAR
 TEL: (+974) 4421 833 / 4930 614
 FAX: (+974) 4410 553 / 4930 614

CONSULTANT:
 ARAB ENGINEERING BUREAU
 مكتب المهندسين العربيات
 ARAB ENGINEERING BUREAU
 مكتب المهندسين العربيات
 Telephone: +974 4471 881 Fax: +974 4471 888 P.O. Box: 148 Doha Qatar
 Email: info@aeq.com.qa Web: www.aeq.com.qa

DESIGNER:
 GHD
 GHD
 25 Bin Meissam Drive, Doha
 T: 974 4332574 F: 974 4446127
 Email: info@ghd.com.qa www.ghd.com.qa

MAIN CONTRACTOR:
 AL MADAR CONTRACTING
 P.O. Box: 2329 DOHA, QATAR
 TEL: (+974) 4675405 - 4674466
 FAX: (+974) 4671333 - C.R. : 15061
 WEB SITE: www.almadar-group.com
 Email: conteng@almadar-group.com

OWNER:
 ALI ABDUL REDA MASHHADI

PROJECT:
 AL NOOR OFFICE TOWER AT NEW DOHA
 2B+G+F+22 FLOORS

DRAWING TITLE:
 FIRST FLOOR
 POWER & TELEPHONE

DRAWING REFERENCE:
 75-10288-E204 - FIRST FLOOR POWER & EXTRA LOW VOLT.
 75-10288-E000 - LEGEND & NOTE
 75-10288-E501-505 - POWER SCHEMATIC DIAGRAM
 75-10288-E601-603 - TELEPHONE SCHEMATIC DIAGRAM

DRAWN BY: L. MANCINI

CHECKED BY: M. SHAMIMUDDIN

APPROVED BY: M. MOHAMUD

DATE: 04.07.07

SCALE: 1:50 **SIZE:** A0

REVISION: 0

DATE: 04.07.07

DRAWING NO.: TC01E2F01035
SHEET: 2 OF 2